

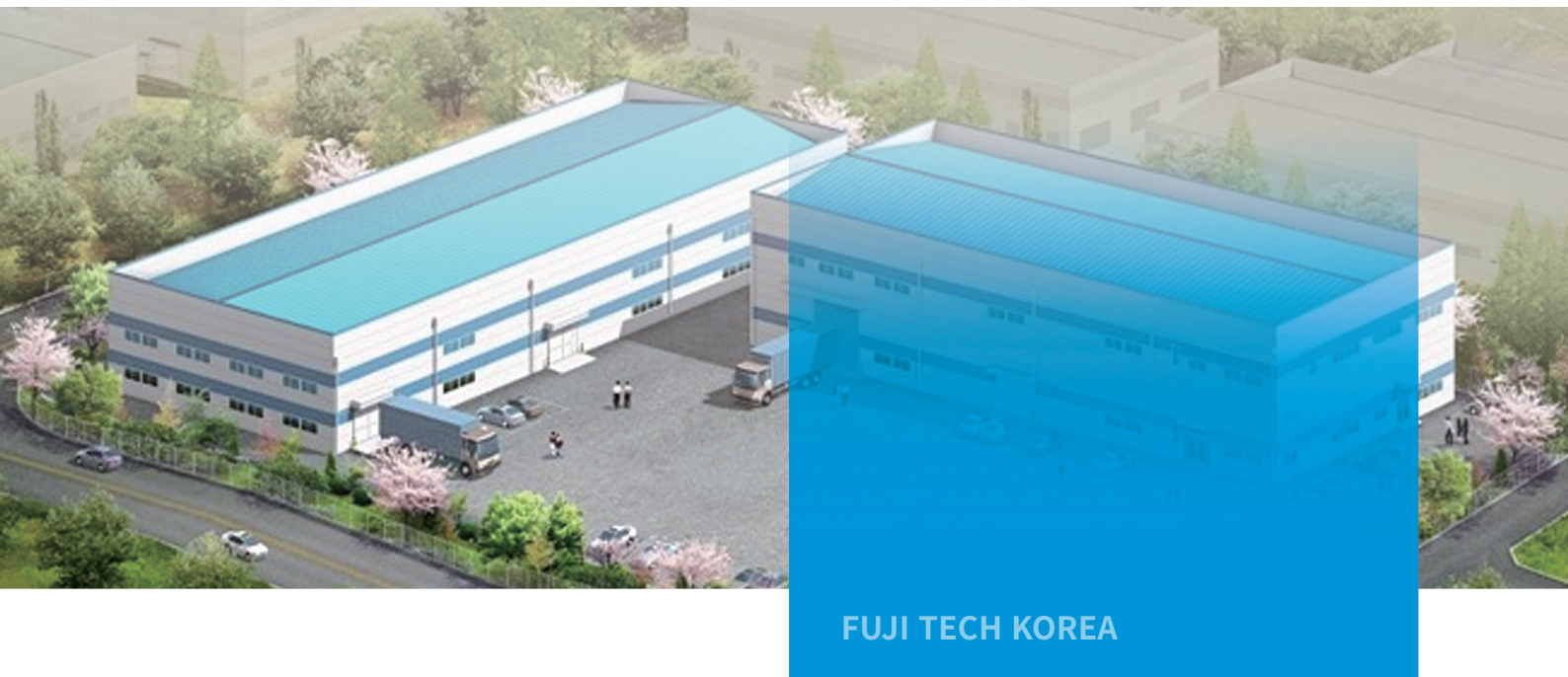


**PASSENGER ELEVATOR / FREIGHT ELEVATOR
PANORAMIC ELEVATOR / BED ELEVATOR
ESCALATOR / MOVING WALK**

FUJI TECH KOREA CO., LTD.

www.fujitechkorea.com

ABOUT US



FUJI TECH KOREA, located in the Busan, Korea, is an integrated supplier of elevators and escalators.

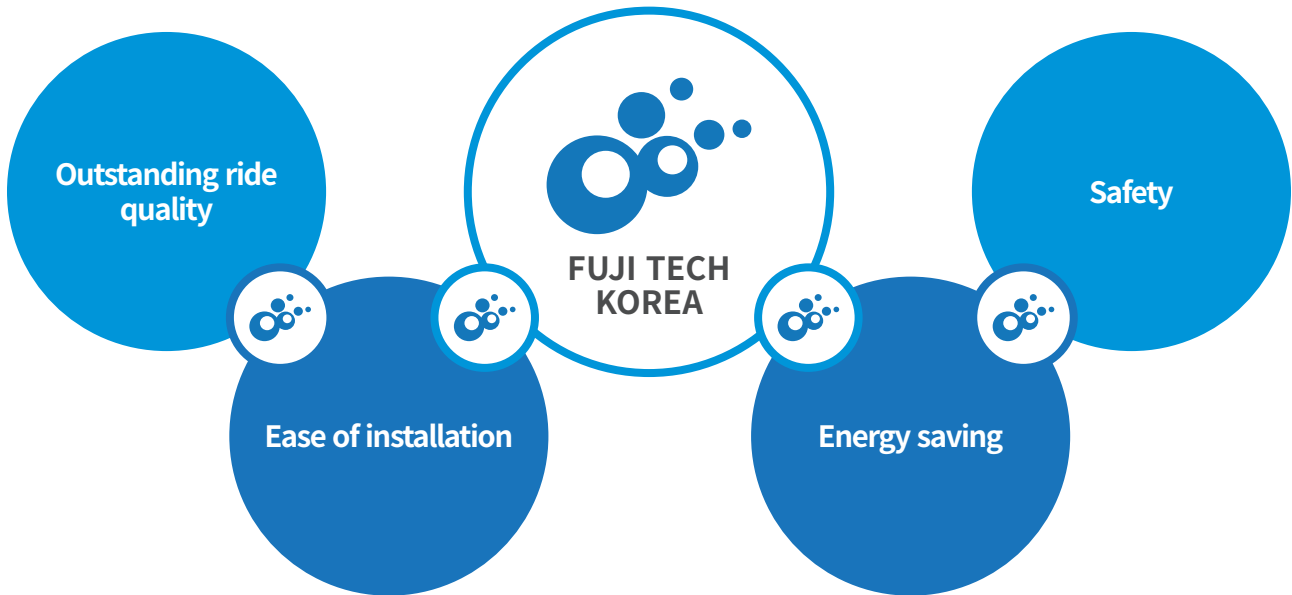
Your safety and convenience is the most importance to us, so we maintain the highest standards of technology to ensure superior innovation in safety and environment friendly.

FUJI TECH KOREA is proud of advanced technology as specialized elevator company. We have built the records of producing elevators and escalators as tailored solutions to meet customer's requirements.

The company's products cover passenger elevator, villa elevator, freight elevator, hospital bed elevator, panoramic elevator, escalator, moving walk and supporting parts.

We offer one of the best elevators in the market, offering superior quality with advanced technology and global competence.

COMPANY MERIT



Outstanding ride quality

FUJI TECH KOREA is designed to deliver both premium quality and exceptional ride comfort. Low noise levels and minimal vibrations ensure a smooth and pleasant passenger experience.

Safety

Feel safe and secure with the guarantee of complete passenger safety.

Ease of installation

Designed for ease of installation and use, reliability and spatial efficiency.

Energy saving

Traction machine and energy regenerative system will give energy efficiency. It uses LED lamps of efficient illuminating and long lifespan. With the automatic lighting system of elevator, the energy is saved.



Small machine room Passenger elevator

Small machine room passenger elevator, based on the human living and needing, contains the contemporary cutting-edge technology. With a forward-looking design, it leads the future development direction of the passenger elevator and becomes a model for highly-standard elevator. With excellent performance and diverse function, it can meet your more requirements for passenger elevator.



FUJI TECH KOREA CO., LTD.

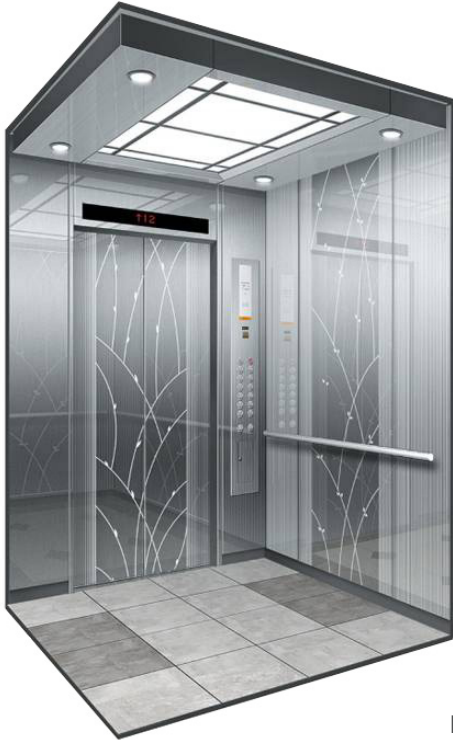


Machine room-less Passenger elevator

It perfectly shows energy-saving, consumption-reducing environment-protection concept. We try hard to save building area, enhance design freedom. It gives a full play of green human-centered ideas. Compared with same load horizontal gear elevator, it can save more power and building area. Machine room-less passenger elevator breaks through a “must” of machine room. It provides limited space with innovative possibilities.

CAR DESIGN

PASSENGER ELEVATOR



Front View



Rear View

Model No.	DY01
Ceiling	CES-019
Car door	STS Hairline Etching
Car wall	STS Hairline Etching
Handrail	HR-01(Round)
Floor	Deco tile



Front View



Rear View

Model No.	DY02
Ceiling	CES-011
Car door	STS Hairline Etching
Car wall	STS Hairline Etching
Handrail	HR-01(Round)
Floor	Deco tile

CAR DESIGN

PASSENGER ELEVATOR



Front View



Rear View

Model No.	DY03
Ceiling	CES-025(STS-Mirror)
Car door	STS Mirror Etching
Car wall	STS Mirror Etching
Handrail	HR-01(Round)
Floor	Deco tile



Front View



Rear View

Model No.	DY04
Ceiling	CES-016(STS-Mirror)
Car door	STS Mirror Etching
Car wall	STS Mirror Etching
Handrail	HR-01(Round)
Floor	Deco tile

CAR DESIGN

PASSENGER ELEVATOR



Front View



Rear View

Model No.	DY05
Ceiling	CES-013
Car door	STS Hairline
Car wall	STS Hairline + Wood Panel
Handrail	HR-01(Round)
Floor	Deco tile



Front View



Rear View

Model No.	DY06
Ceiling	CES-43
Car door	STS Mirror
Car wall	STS Mirror + Wood Panel
Handrail	HR-01(Round)
Floor	Deco tile

CAR DESIGN

PASSENGER ELEVATOR



Front View



Rear View

Model No.	DY07
Ceiling	CES-012(Gold mirror)
Car door	Titanium gold Etching
Car wall	Titanium gold Etching
Handrail	HR-01(Round)
Floor	Deco tile



Front View



Rear View

Model No.	DY08
Ceiling	CES-018(Gold mirror)
Car door	Titanium gold Etching
Car wall	Titanium gold Etching
Handrail	HR-01(Round)
Floor	Deco tile

CAR DESIGN

PANORAMIC ELEVATOR



DY-P09



DY-P10

Model No.	DY-P09
Car cover	Baked enamel steel
Observation wall	Laminated glass
Decoration ceiling	Mirror stainless steel, acrylic, down lamp
Car wall	Mirror stainless steel
Handrail	Stainless steel tube handrail
Floor	Deco tile

Model No.	DY-P10
Ceiling	Mirror stainless steel, hairline stainless steel, shoot the light
Car wall	Hairline stainless steel, laminated safety glass
Handrail	Stainless steel tube
Floor	Deco tile



DY-P11



DY-P12

Model No.	DY-P11
Car cover	Paint steel, hairline stainless steel
Observation wall	Toughened laminated glass
Decoration ceiling	Painted steel plate, acrylic, LED lighting
Car wall	Hairline stainless steel
Floor	Deco tile

Model No.	DY-P12
Car cover	Paint steel, hairline stainless steel
Observation wall	Toughened laminated glass
Decoration ceiling	Painted steel plate, acrylic, LED lighting
Car wall	Hairline stainless steel
Floor	Deco tile

CAR DESIGN BED ELEVATOR



Front View



Rear View

Model No.	DY-B13
Ceiling	CES-015
Car door	STS Hairline Etching
Car wall	STS Hairline Etching
Handrail	HR-01(Round)
Floor	Deco tile



CAR DESIGN

FREIGHT ELEVATOR



Front View



Rear View

Model No.	DY-F14
Ceiling	Painted Steel
Car door	STS Hairline
Car wall	STS Hairline
Floor	Deco tile



HALL DESIGN / ETCHING PATTERN

HALL DESIGN



- **Hall door** : Titanium good mirror etching
- **Jamb** : Wide Jamb
- **LOP** : HPI, HB

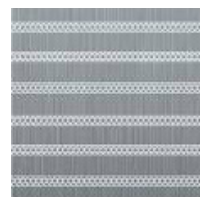
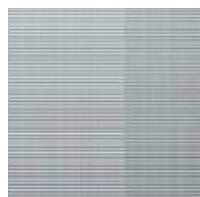
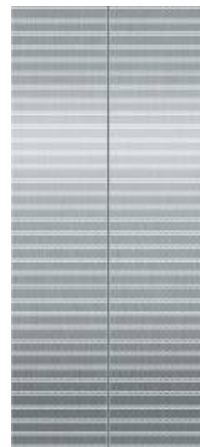


- **Hall door** : STS Hairline
- **Jamb** : Wide Jamb
- **LOP** : HIB



- **Hall door** : Painted steel
- **Jamb** : Narrow Jamb
- **LOP** : HIB

ETCHING PATTERN



ET-082

ET-083

ET-084

ET-085

ET-086

ET-087

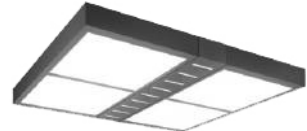
CEILING



CES-011



CES-012



CES-013



CES-014



CES-015



CES-016



CES-017



CES-018



CES-019



CES-020



CES-021



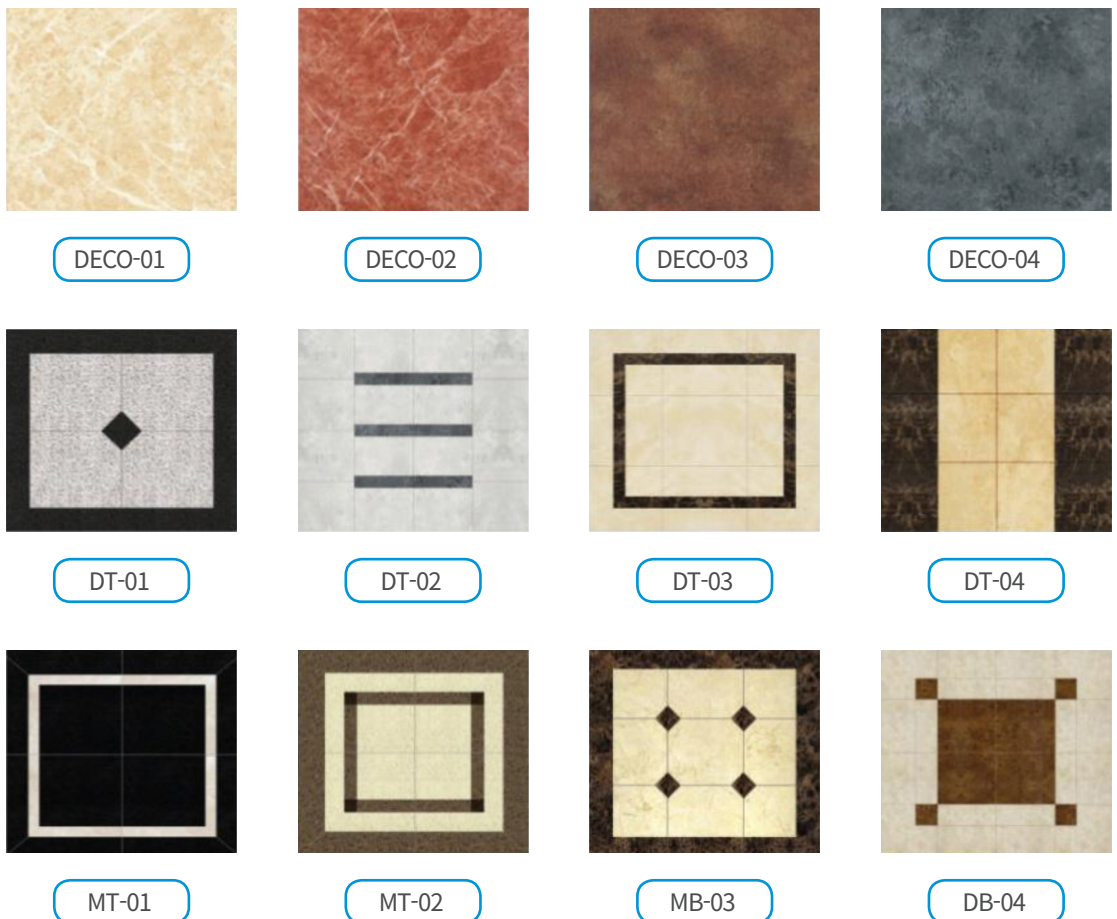
CES-023

HAND RAIL / FLOOR

HAND RAIL



FLOOR

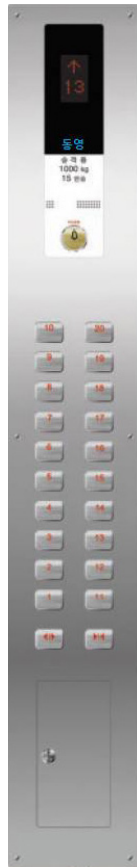


COP / COP(Disabled)

COP



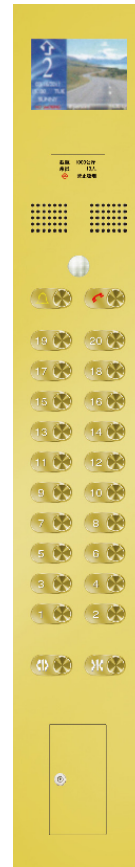
DYCOP-R11



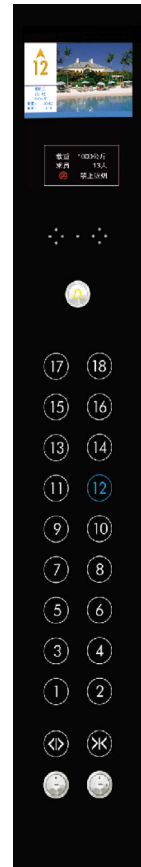
DYCOP-R12



DYCOP-R13



DYCOP-R14



DYCOP-R15

COP(Disabled)



DYCOP-D22



DYCOP-D23



DYCOP-D24

Comfortable & Safe

Ride with High Performance

HB / HIB / CPI/HPI / HALL LANTERN

HB



HB-10



HB-11



HB-12D



HB-13



HB-14



HB-15D

HIB



HIB-D23



HIB-D24



HIB-D25



HIB-D26



HIB-D27



HIB-D28

CPI/HPI



CHPI-33



CHPI-34



CHPI-35



CHPI-36

HALL LANTERN



HL-01

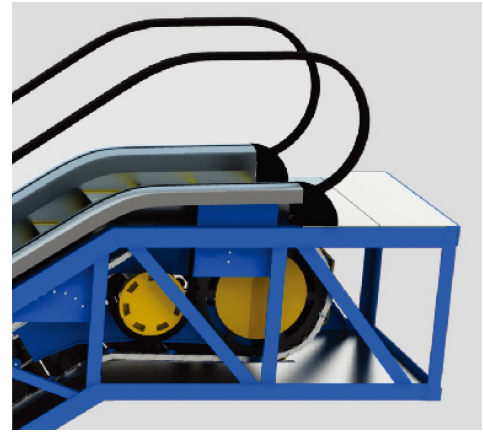


HL-02

ESCALATOR / MOVING WALK

Advanced scientific research technology finds supreme quality

FUJI TECH KOREA escalator applies the advanced international technology and design concept for manufacture. It features as smooth travel, low noise, durable, convenient repair and so forth. It has fine and delicate structure, advanced stairway, graceful belt, deluxe and attractive outline. It provides the passengers with a completely new, bright, beautiful and comfortable feel. It grants you to appreciate the extraordinary charm and luxurious manner of modern building.



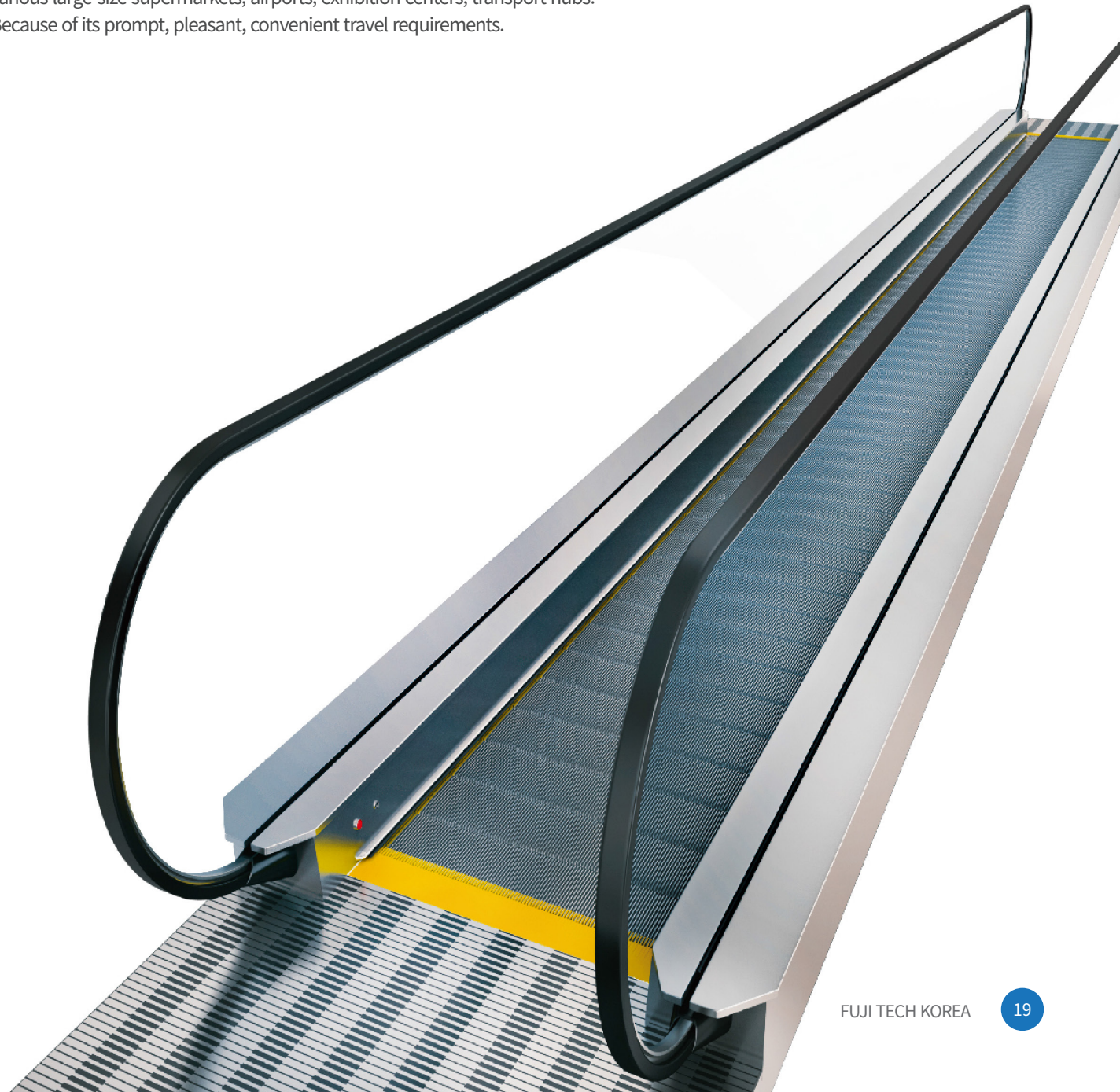
Optimized design saves the space

Minimum span size greatly saves the occupied space.

The compact pit depth design brings about a free construction layout.

Popular outline brings about the better travel experience

FUJI TECH KOREA moving walk is widely applicable for large-size supermarket, public building, airport, exhibition center, transport hub, etc. in the colorful modern cities. Because of its own characteristics, it can solve the transport problem of large passenger flow. It also meets the requirements of long-distance walk, transport of luggage cart; baby carriage; shopping cart; vehicle for disabled. People feel as easily as walking on firm earth in up/down shopping and travel. It is greatly convenient for people's outing and shopping. It becomes the first-choice solution plan in various large-size supermarkets, airports, exhibition centers, transport hubs. Because of its prompt, pleasant, convenient travel requirements.



OUTSTANDING TECHNOLOGY

It is superior performance design, firm and integrated spares. And parts can more flexibly conform with the bilateral needs from both commercial and public traffic & transportation.

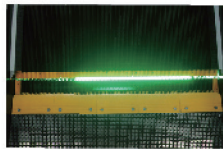
Handrail entry safety protection

Protection against risk of foreign matters being jammed into handrail entry.



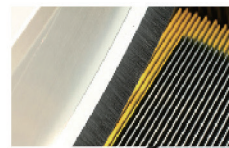
Demarcation lamp

Soft and green fluorescent light sends out from the engaging teeth in-between two adjacent steps(treads) in up/down end. It reminds the passengers to pay attention to the step entry/exit horizontal section. It thus enhances the travel safely.



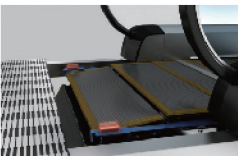
Skirt panel brush

Brush is installed between step and skirting so that the passengers' shoes do not touch the skirt panel.



Cover-plate anti-reversal technology

It applies "movable cover-plate hook-up device". A strengthened hook-up device is installed respectively left and right of movable cover-plate. It ensures that frontline cover-plate is safe and firm under various conditions. It will not be reversed.



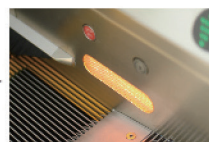
Automatic Lubricator

It is controlled by micro-computer. It gives lubricating signal within the set period. It automatically connects with hydraulic pump for oiling and lubrication.

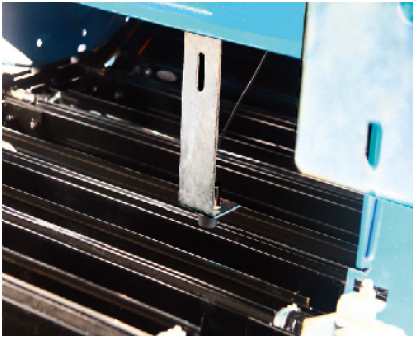


Comb Teeth Safety Devices

Front ends of comb teeth plates are installed on springs. If any foreign substance is nipped between moving escalator steps and static comb teeth plates; such plates will move in vertical or backward directions, and trigger the safety switches monitoring at both sides of the plates, and the escalators will be automatically stopped.



STANDARD CONFIGURATION



Protection device for stair deficiency

Sensor is installed in rotation of stairs of escalator, then there is deficiency of stairs, the escalator will stop operation.



Handrail inlet

The escalator is designed with novel, elegant style, which displays the nobleness and imposing manner of the conveying constructions.

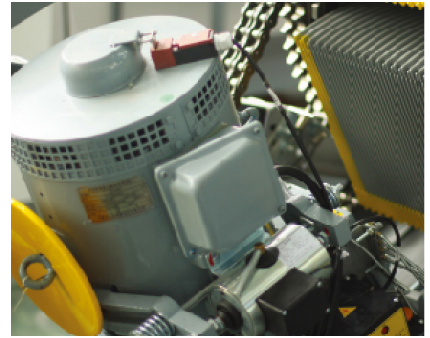
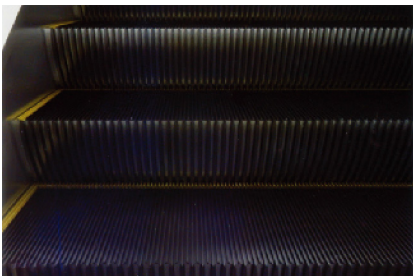


Table type traction machine

The smooth engagement and the frictional reduction guarantees the extremely low noise. It can reduce more than 60% of the noise. Compared with the traditional worm wheel drive, it is of higher driving efficiency.



Step

Black stainless steel

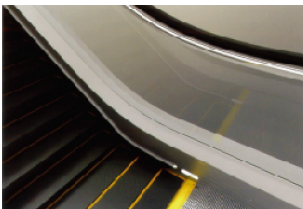


Step

Silver stainless steel

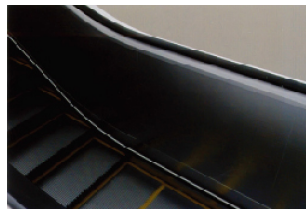


Handrail



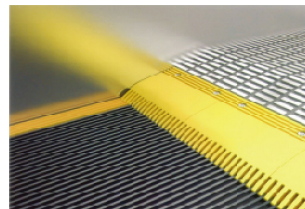
Balustrade

Safety glass colorless
(Vertical handrail standard)



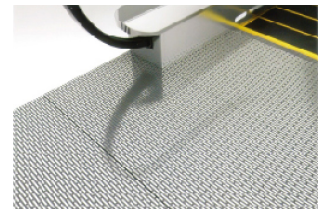
Balustrade

Stainless steel
(Oblique inclined handrail standard)



Comb teeth

Yellow resin



Leading edge board, floor plate

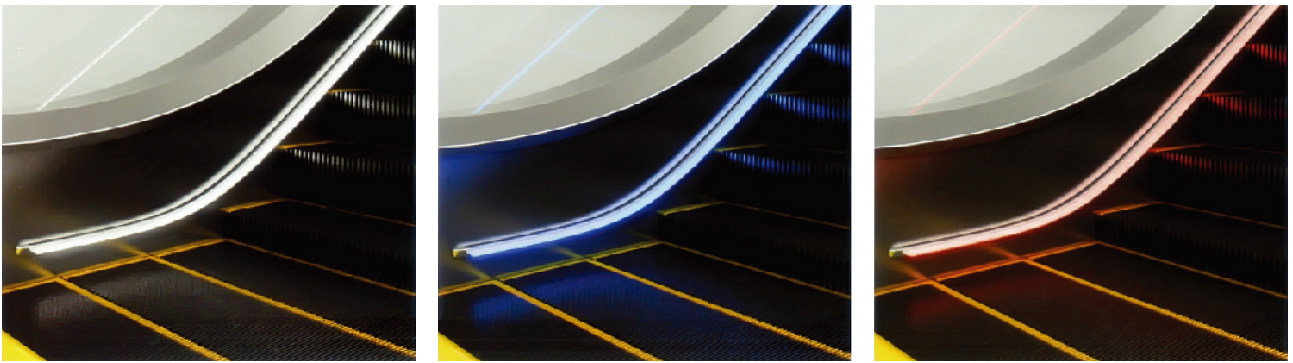
Stainless steel

STANDARD FUNCTION

Function Name	Function Description
Static electricity protection	Eliminate static electricity raised from running of steps.
Emergency stop button	Push the emergency stop button to stop the escalator/moving walk against emergency raise.
Skirting protection	Protection against risk of foreign bodies being jammed into clearance between steps and skirting.
Handrail entry safety protection	Protection against risk of foreign bodies being jammed into handrail entry.
Main drive chains safety protection	Protection against risk of drive chains being breakage or undue elongation.
Over-speed protection	Protection against risk of speed being over 20% of rated speed.
Under-speed protection	Protection against risk of speed less than 80% of rated speed.
Un-intentional reversal protection	Protection against risk of unintentional reversal protection.
Lack of phase, error phase protection	Protection against risk of phase failure.
Short circuit protection	Protection against risk of short circuit.
Over-load protection	Protection against risk of motor continually over-load.
Step sagging protection	Protection against risk of steps being breakage and sagging.
Broken step chain protection	Protection against risk of step chains being breakage or under elongation.
Comb teeth safety protection	Protection against risk of foreign bodies being trapped at the point where the step enter the comb.
Handrail speed and broken handrail monitor	It detects the handrail speed and monitors the broken handrail.
Skirting anti-clamp device	It sets protection brush in the skirting on both sides of the step.
Step missing detection	It detects the step missing in the stairway.
The brake opens the monitor switch	It monitors whether the brake opens or not in during the escalator running.
Handwheel and handwheel protection cover open safety	During the use of handwheel, when open the handwheel and the handwheel protection cover, the safety switch will cut the safety circuit against escalator running.
Floor-plate monitor switch	When the pit cover plate opens, it cuts off safety circuit and stops the escalator safety switch.
Monitor of brake distance	It monitors brake distance of the escalator and auto-walk.

OPTIONAL CONFIGURATION

Skirting panel lighting

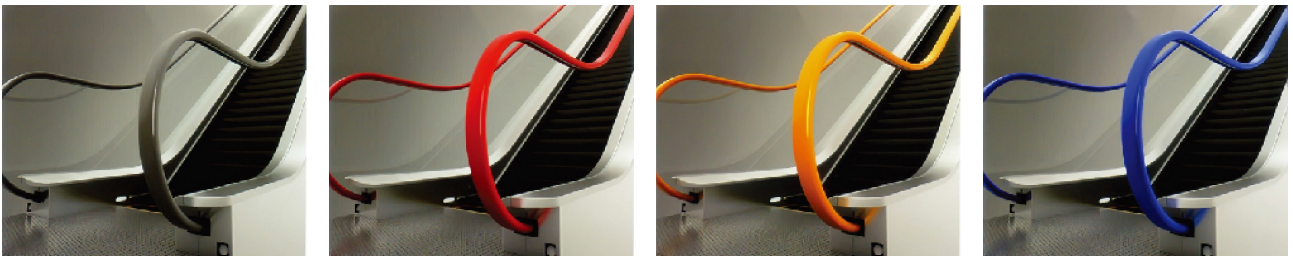


White

Blue

Red

Handrail color



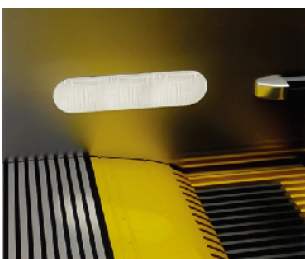
Gray

Red

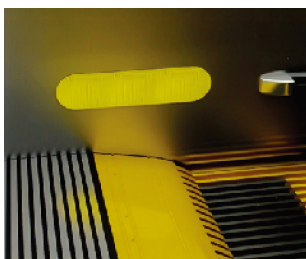
Orange

Blue

Comb teeth lighting

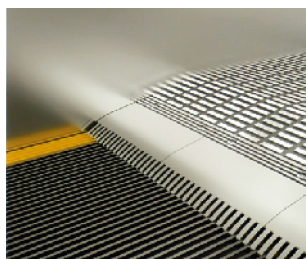


White LED



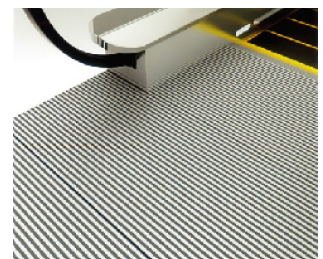
Yellow LED

Comb teeth



Aluminum

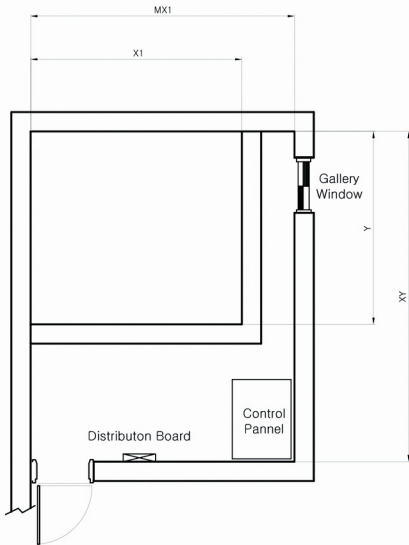
Leading edge board, floor plate



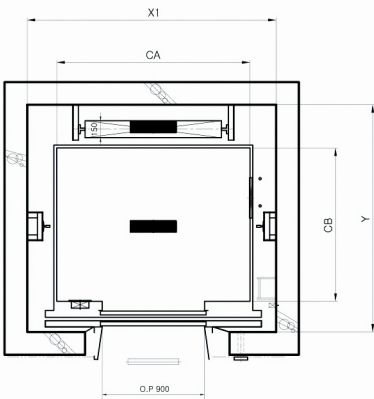
Aluminum

PLANING GUIDE - Machine room

MACHINE ROOM



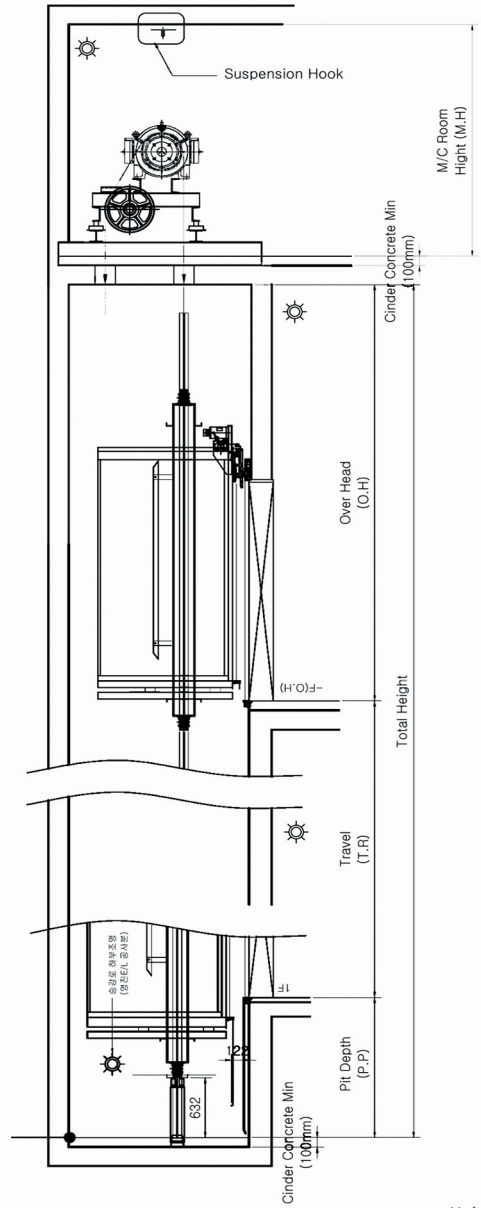
HOISTWAY PLAN



Unit : mm

SPEED (M/MIN)	OVER HEAD (OH)	PIT (PP)	M/C ROOM HEIGHT (MH)
60	4300	1300	2200
90	4500	1600	2400
105	4800	1800	2400

HOISTWAY SECTION

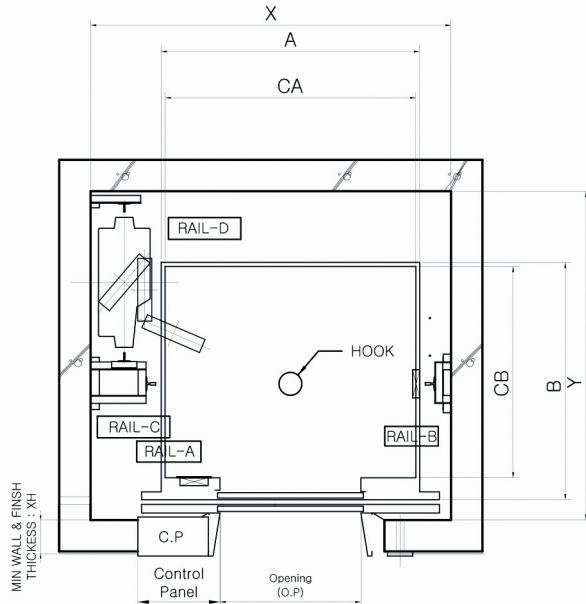


Unit : mm

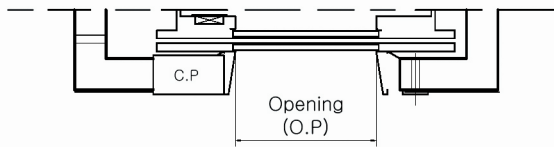
SPEED (M/MIN)	CAPACITY		DOOR OPENING	CAR	HOISTWAY		M/C ROOM		M/C ROOM REACTION	
	PERSONS	KG		INTERNAL	WIDTH	DEPTH	WIDTH	DEPTH	KG	
			CA X CB	X1	Y	MX1	MY	R1	R2	
60	6	400	700	1400x850	1800	1480	2400	3180	3600	2100
	7	450	700	1400x950	1800	1700	2400	3360	4050	2250
	8	550	800	1400x1030	2000	1700	2400	3430	4100	2450
	9	630	800	1400x1150	2000	1800	2400	3700	4200	2700
90	11	800	800	1400x1350	2000	1900	2400	3700	4550	2800
	13	900	900	1600x1350	2300	1900	2650	3700	5100	3750
105	15	1000	900	1600x1500	2300	2100	2650	3850	5450	4300
	17	1150	1000	1800x1500	2500	2100	2950	3980	6600	5100
	20	1350	1000	1800x1700	2700	2300	2950	4180	7800	6000
	24	1600	1100	2000x1800	2900	2500	3150	4230	8500	6800

PLANING GUIDE - Machine room less

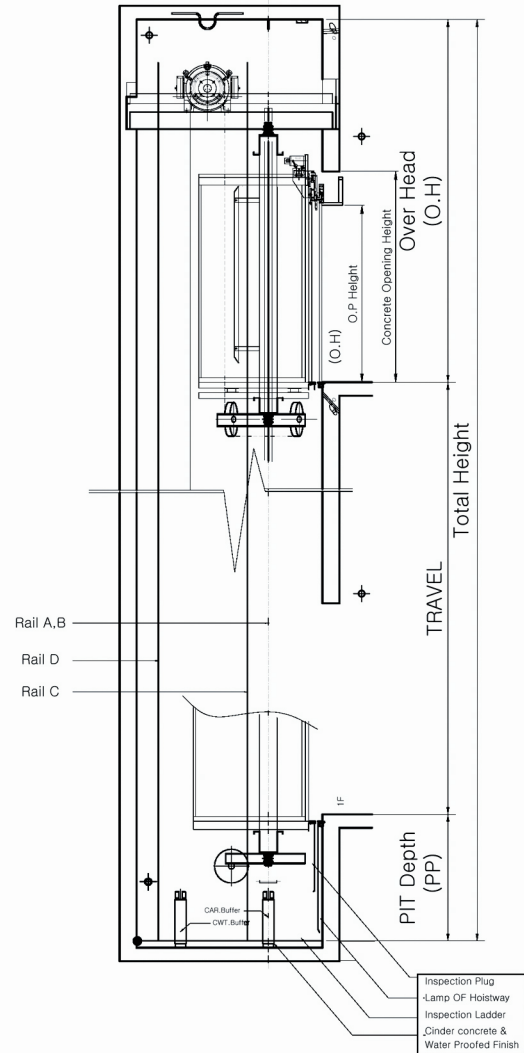
HOISTWAY PLAN



Top Floor(with Controller)



HOISTWAY SECTION



R1 - Car Buffer
R2 - CWT Buffer
R3 - Car Rail A
R4 - Car Rail B

Unit : mm

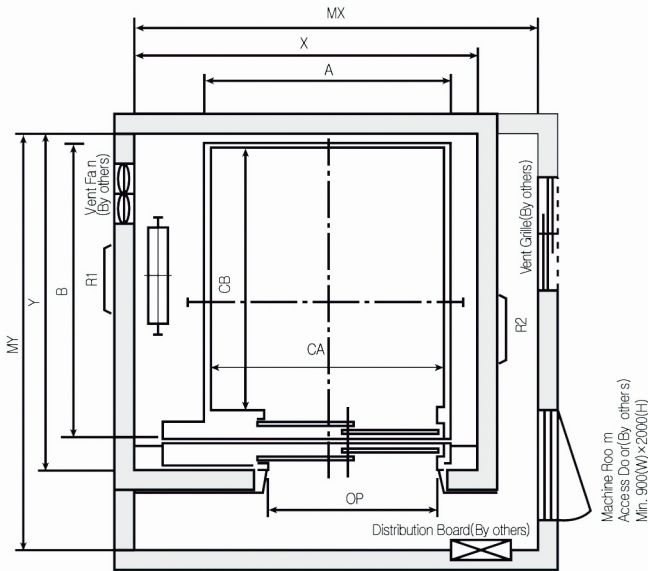
SPEED (M/MIN)	OVER HEAD (OH)	PIT (PP)
60	4300	1450
90	4500	1600
105	4700	1700

SPEED (M/MIN)	CAPACITY		DOOR OPENING	CAR		HOISTWAY		M/C ROOM REACTION			
				INTERNAL	WIDTH	DEPTH	R1	R2	R3	R4	
	PERSONS	KG		OP	CA X CB	X1	Y	Front(kg)	Rear(kg)	Front(kg)	Rear(kg)
60	6	400	700	1100x1100	1800	1700	2200	4000	1500	4000	
	7	450	700	1100x1150	1800	1800	2200	4000	1500	4000	
	8	550	800	1100x1200	1800	1800	2200	4000	1500	4000	
	9	630	800	1100x1400	1850	1900	2300	4300	1600	600	
90	11	800	800	1300x1400	2000	1900	2300	4500	1600	600	
	13	900	900	1500x1400	2200	1900	2600	5100	1900	700	
105	15	1000	900	1600x1450	2250	1950	2600	5200	1900	700	
	17	1150	1000	1800x1450	2500	2000	2900	5900	2200	900	
	20	1350	1000	1800x1700	2700	2600	3500	6800	2500	1100	
	24	1600	1100	1800x1900	2700	2700	4700	7200	3000	1200	

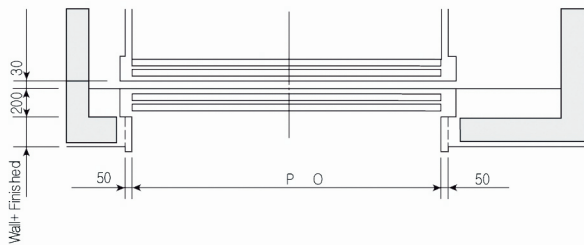
PLANING GUIDE

- FREIGHT ELEVATOR

HOISTWAY PLAN

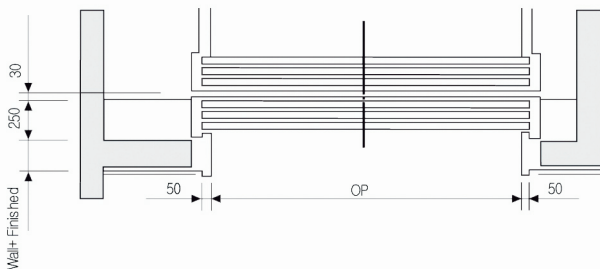


2-PANEL SIDE-OPENING DOORS (2S)



2-PANEL UP-SLIDING DOORS (2U)

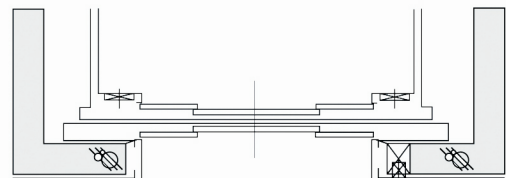
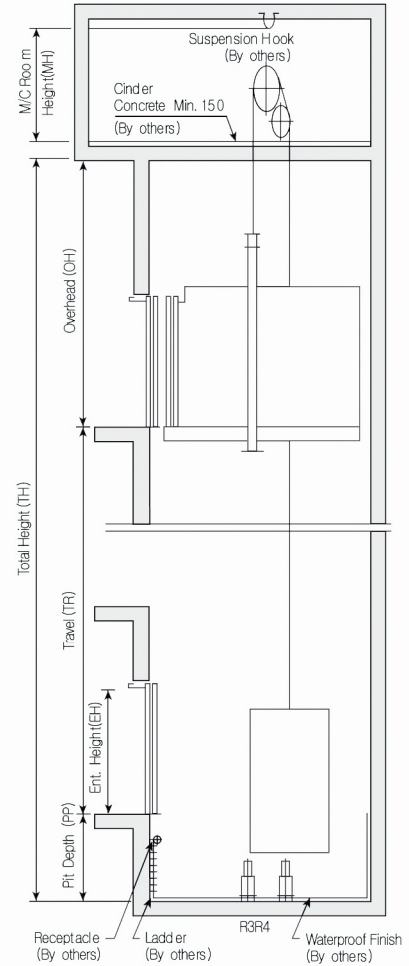
- Minimum floor height : Opening height x 3/2+700mm
- Minimum entrance height : 2100mm



3-PANEL UP-SLIDING DOORS (3U)

- Minimum floor height : Opening height x 4/3+750mm
- Minimum entrance height : 2100mm

HOISTWAY SECTION



PLANING GUIDE

- FREIGHT ELEVATOR

CAPACITY (KG)	SPEED (M/MIN)	DOOR OPENING	OP (OP x EH)	CAR SIZE		HOISTWAY SIZE	OVERHEAD (OH)	M/C ROOM (MX x MY)	M/C ROOM REACTION (KG)		BUFFER REACTION (KG)	
				INTERNAL	EXTERNAL				R1	R2	R3	R4
				CA x CB	A x B	X x Y						
750	30 45 60	2S	1100x2100	1700x1650	1800x1857	2500x2150	4800	2300x3200	6200	4100	5000	4300
1000	30 45 60	2S	1400x2100	1850x1850	1950x2075	2750x2400	4800	3200x3500	8500	5700	7100	6100
1500	30 45 60	2S	1700x2100	2100x2500	2200x2728	3000x3050	4800	3600x4000	10800	7100	9000	9500
2000	30 45 60	2S	1700x2100	2300x2700	2400x2928	3300x3250	4800	3800x4200	13300	8800	11400	9400
2000	30 45 60	2U	2300x2100	2300x2700	2400x2898	3300x3250	4600	3800x4200	13300	8800	11400	9400
2500	30 45 60	2S	1800x2100	2500x3000	2600x3228	3500x3600	4800	4000x4400	15100	10000	13200	10700
2500	30 45 60	2U	2500x2100	2500x3000	2600x3198	3500x3600	4600	4000x4400	15100	10000	13200	10700
3000	30 45	2U	2700x2300	2700x3300	2800x3498	3700x3900	4800	4200x4800	15200	10100	13500	10500
3500	30 45	2U	2800x2500	2800x3800	4050x4400	4050x4400	5000	4300x4800	21700	14500	19000	15500
4000	30 45	3U	3000x2800	3000x4500	3220x4758	4250x5520	5300	4500x5900	32500	21700	18700	23700
5000	30 45	3U	3200x3000	3200x5000	3420x5258	4450x5750	5500	4700x6400	36000	23000	31700	26700

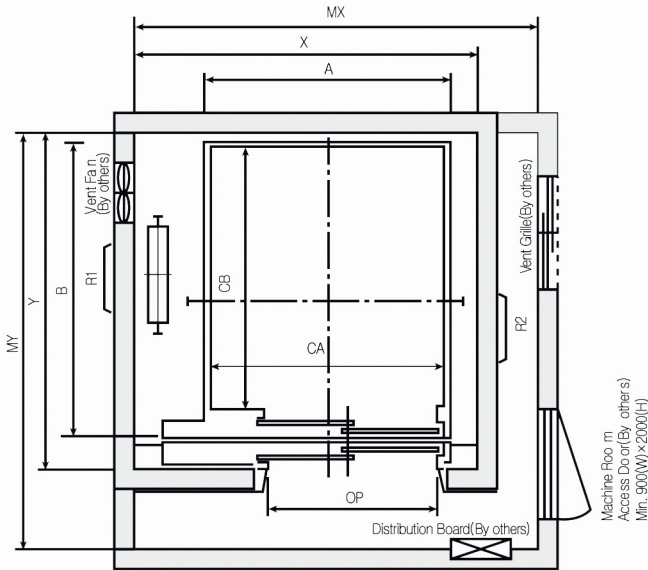
Unit : mm

SPEED (M/MIN)	PIT (PP)	M/C ROOM HEIGHT (MH)
30,45	1250	2400
60	1500	2600

PLANING GUIDE

- BED ELEVATOR

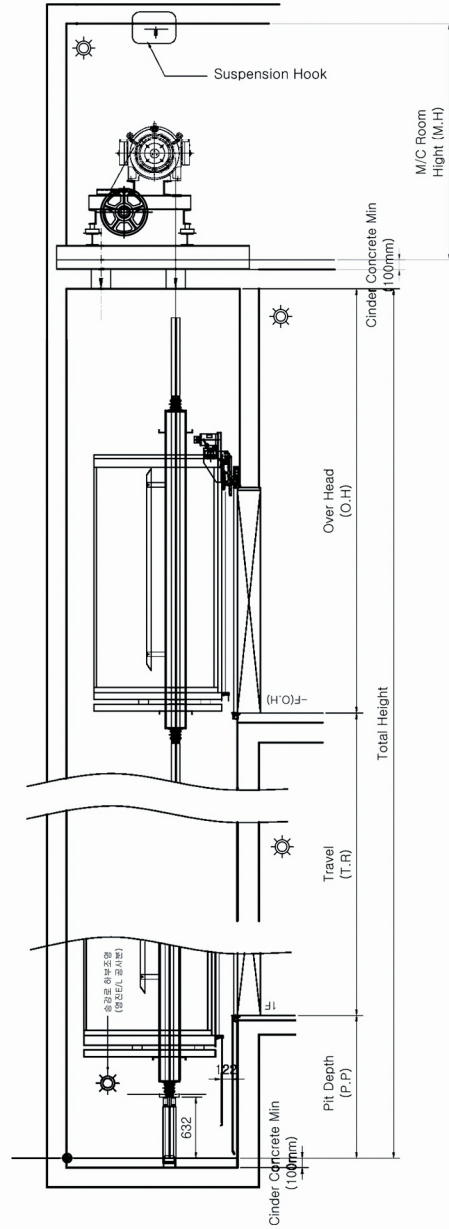
HOISTWAY PLAN



Unit : mm

SPEED (M/MIN)	OVER HEAD (OH)	PIT (PP)	M/C ROOM HEIGHT (MH)
60	4500	1500	2200
90	4600	1600	2300
105	4700	1700	

HOISTWAY SECTION

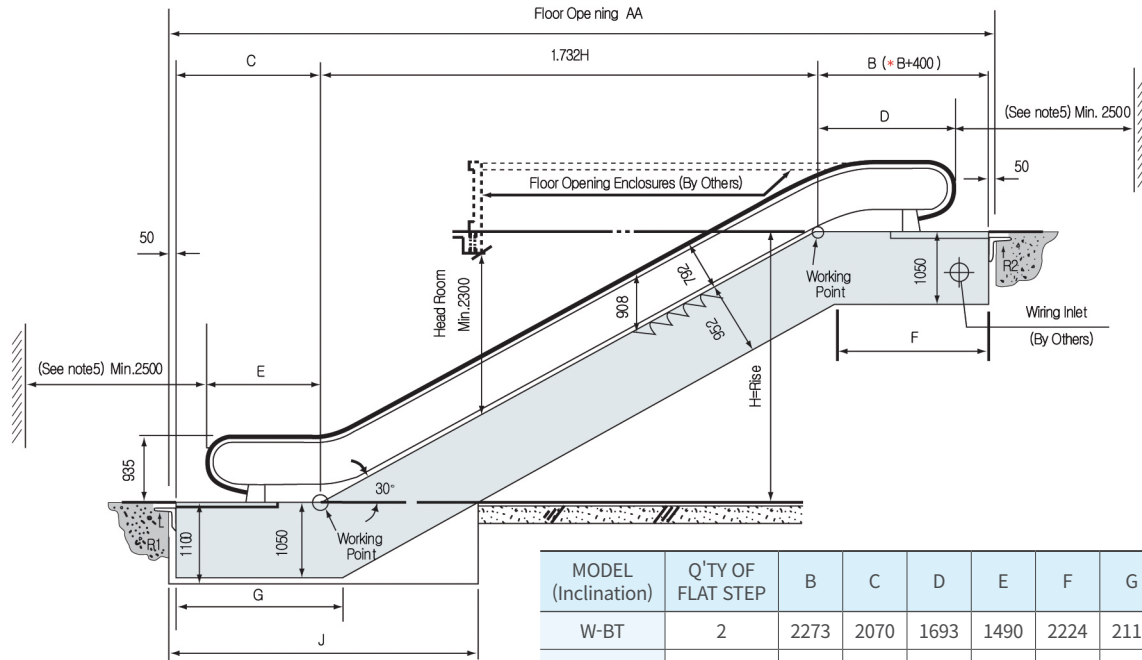


Unit : mm

TYPE	CAPACITY (KG)	MODEL	SPEED (M/MIN)	CAR SIZE		HOISTWAY X x Y	M/C ROOM MX x MY	M/C ROOM REACTION (KG)	
				INTERNAL CA x CB	EXTERNAL A x B			R1	R2
				SIDE OPENING	750				
5900	3750								
1000	60	1200	1500x2500		1560x2690	2300x3050	2750x4000	6500	3700
								6800	5100
SIDE OPENING DOUBLE ENTRANCE	750	60	1100	1300x2300	1360x2634	2050x3000	2300x3500	5790	6450
								5900	3700
	1000	60	1200	1500x2500	1560x2834	2450x3200	2750x4000	9300	3700
								9500	4100

CONSTRUCTION SKETCH

- 30° ESCALATOR

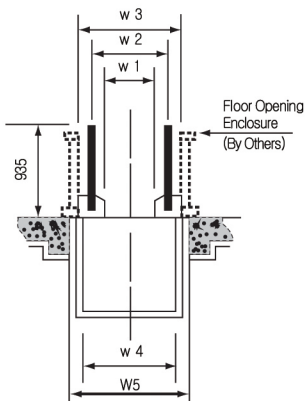


MODEL (Inclination)	Q'TY OF FLAT STEP	B	C	D	E	F	G	I
W-BT	2	2273	2070	1693	1490	2224	2118	4300
W-BTL	3	2680	2477	2100	1897	2631	2525	4740
W-BB	2	2400	2070	1820	1490	2351	2118	4300
	3	2807	2477	2227	1897	2758	2525	4740

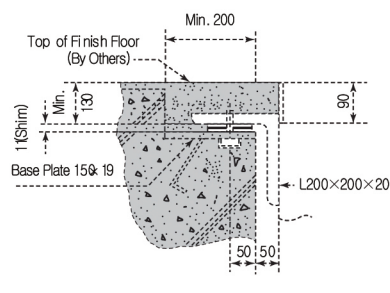
Section Dimensions

Unit : mm

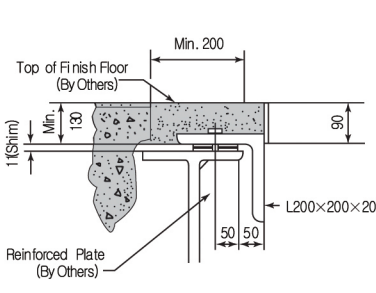
TYPE	W800	W1000	W1200
W1	594	813	1014
W2	839	1057	1257
W3	1132	1350	1550
W4	1082	1300	1500
W5	1232	1450	1650



Typical Concrete Support



Typical Steel Support



Reactions

Unit : kg

VERTICAL RISE(mm)	W800		W1000		W1200	
	R1	R2	R1	R2	R1	R2
3000	3600	4200	4100	4700	4500	5150
3200	3725	4335	4200	4850	4660	5315
3400	3850	4470	4300	5000	4820	5480
3600	3975	4605	4500	5150	4980	5645
3800	4100	4740	4600	5300	5140	5810
4000	4225	4875	4750	5450	5300	5975
4200	4350	5010	4900	5600	5460	6140
4400	4475	5145	5050	5750	5620	6305
4600	4600	5280	5200	5900	5780	6470
4800	4725	5415	5350	6050	5940	6635
5000	4850	5550	5500	6200	6100	6800
5200	4975	5685	5650	6350	6260	6965
5400	5100	5820	5800	6500	6420	7130
5600	5225	5955	5900	6650	6580	7295
5800	5300	6090	6050	6800	6740	7460
6000	4575	5475	6200	6950	6900	7625

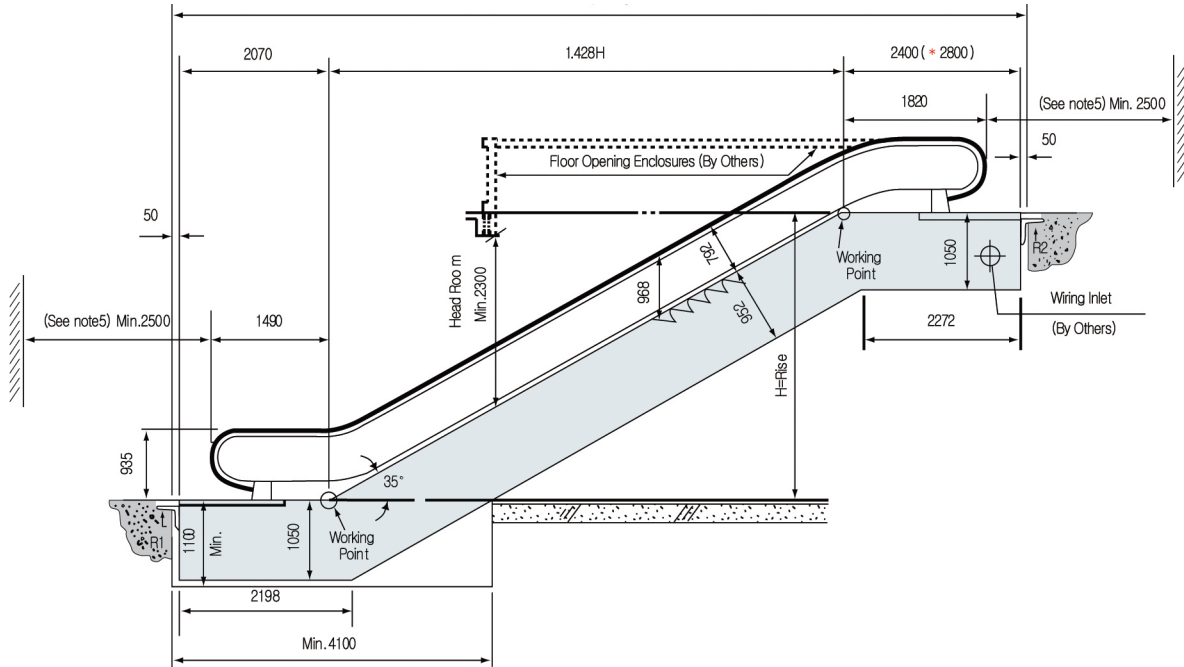
Motor Application

Speed : 30m/min

TYPE	VERTICAL RISE(MM)			
	H ≤ 7600	H ≤ 9000	H ≤ 10500	-
W800	H ≤ 5000	H ≤ 7600	H ≤ 9000	H ≤ 10500
W1000	H ≤ 4200	H ≤ 6000	H ≤ 7600	H ≤ 10500
MOTOR	5.5 KW	7.5 KW	11 KW	15 KW

CONSTRUCTION SKETCH

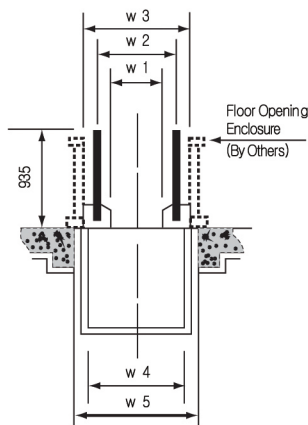
- 35° ESCALATOR



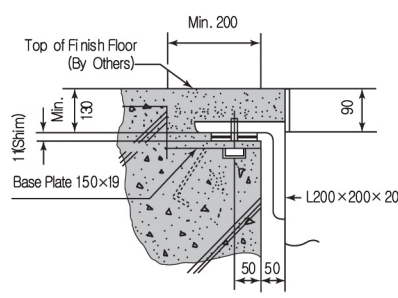
Section Dimensions

Unit : mm

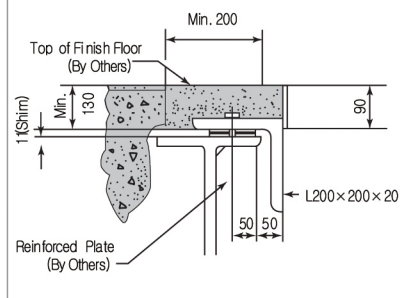
TYPE	W800	W1000	W1200
W1	612	1014	1014
W2	855	1057	1257
W3	1147	1350	1550
W4	1097	1300	1500
W5	1248	1450	1650



Typical Concrete Support



Typical Steel Support



Reactions

Unit : kg

VERTICAL RISE(mm)	W800		W1000		W1200	
	R1	R2	R1	R2	R1	R2
3000	3520	4120	3950	4605	4400	5050
3200	3645	4255	4100	4750	4560	5215
3400	3770	4390	4200	5000	4720	5380
3600	3895	4525	4350	5145	4880	5545
3800	4020	4660	4500	5295	5040	5710
4000	4145	4795	4650	5445	5200	5875
4200	4270	4930	4800	5595	5360	6040
4400	4395	5065	4950	5745	5520	6205
4600	4520	5200	5100	5895	5680	6370
4800	4645	5335	5250	6045	5840	6535
5000	4770	5470	5400	6195	6000	6700
5200	4895	5605	5550	6345	6160	6865
5400	5020	5740	5700	6495	6320	7030
5600	5145	5850	5850	6645	6480	7195
5800	5270	6010	6000	6795	6640	7360
6000	5395	6145	6150	6945	6800	7525

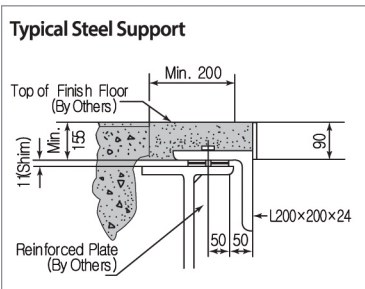
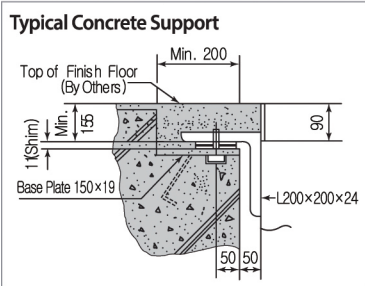
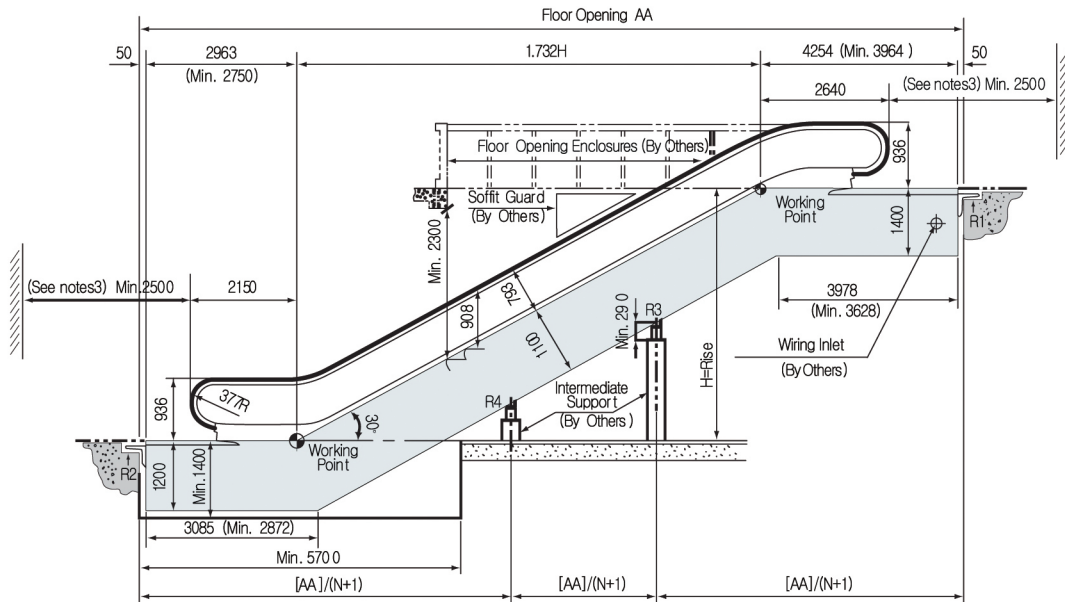
Motor Application

Speed : 30m/min

TYPE	VERTICAL RISE(MM)	
W800	H ≤ 5800	H ≤ 6000
W1000	H ≤ 5000	H ≤ 6000
W1200	H ≤ 4200	H ≤ 6000
MOTOR	5.5 KW	7.5 KW

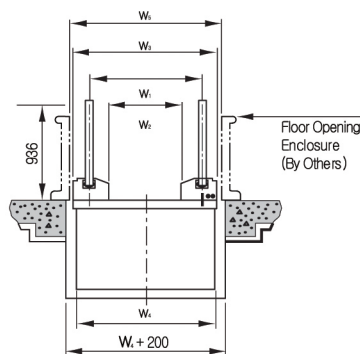
CONSTRUCTION SKETCH

- MOVING WALK



Section Dimensions Unit : mm

TYPE	HA800	HA1000	HA1200
W1	594	813	1014
W2	986	1205	1406
W3	1330	1549	1750
W4	1280	1499	1700
W5	1430	1650	1850



Motor Application

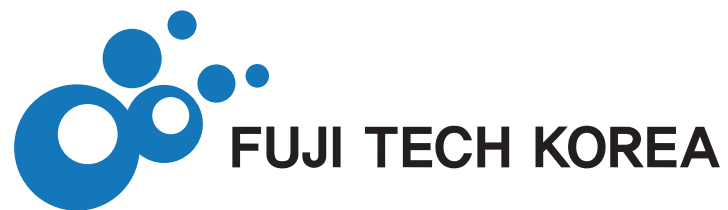
Speed : 30m/min

TYPE	VERTICAL RISE(MM)			
	H ≤ 13000	17800	13600	15000
HA800	-	-	-	-
HA1000	-	13400	13600	-
HA1200	-	H ≤ 11000	H ≤ 12800	H ≤ 15000
MOTOR	11 KW	16 KW	18.5 KW	22 KW

Reactions

Unit : kg

VERTICAL RISE(mm)		7600	8000	8400	8800	9200	9600	10000	10400	10800	11200	11600	12000	12400	12800	13200	13600
FLOOR OPENING AA(mm)		20326	21019	21711	22404	23097	23790	24483	25175	25868	26561	27254	27847	28539	29332	29925	30718
HA800	R1	5840	6010	6190	6360	6530	6700	4980	5100	5220	5330	5450	5570	5680	5800	5910	6030
	R2	5170	5330	5500	5660	5830	6000	4210	4320	4430	4540	4650	4760	4870	4980	5090	5200
	R3	9890	10210	10530	10850	11170	11480	8040	8250	8450	8660	8870	9090	9300	9510	9720	9930
	R4	-	-	-	-	-	-	7760	7980	8190	8410	8630	8840	9060	9280	9490	9710
HA1000	R1	6470	6650	6840	7030	7210	7400	5540	5670	5800	5920	6050	6180	6310	6430	6560	6680
	R2	5640	5820	6000	6190	6360	6540	4600	4720	4840	4960	5080	5200	5320	5440	5560	5680
	R3	10800	11150	11150	11840	12190	12540	8770	9000	9230	9460	9690	9920	10150	10380	10610	10840
	R4	-	-	-	-	-	-	8480	8710	8950	9190	9420	9660	9900	10130	10370	10610
HA1200	R1	6960	7160	7370	7570	7770	7970	5990	6130	6270	6410	6550	6680	6820	6960	7090	7230
	R2	6120	6310	6510	6700	6900	7090	4990	5120	5250	5380	5510	5640	5770	5900	6030	6160
	R3	11730	12110	12480	12860	13240	13620	9520	9770	10010	10260	10520	10770	11020	11270	11520	11770
	R4	-	-	-	-	-	-	9210	9470	9720	9980	10240	10500	10760	11010	11270	11530



ADDRESS

13, Jaeban-ro 165beon-gil
Haeundae-gu, Busan, Korea

TEL / FAX

+82-51-781-1300
+82-504-409-1301

E-MAIL

elevator@fujitechkorea.com

HOMEPAGE

www.fujitechkorea.com